

TRACT REGISTER OF ACQUISITION AFTER 1 JULY 1940

TRACT NO.	LAND OWNER	ACREAGE			REMARKS
		TRANS.	LEASE	LICENOR	
A	DEPARTMENT OF INTERIOR, BUREAU OF LAND MANAGEMENT	2,851.68			P.L.O. 1125, DATED 4-15-55
	* JOHN L. WALLACE				LEASE AND SUSPENSION AGREEMENT DA-04-203 ENG-4047 **
	* EMERALD E. STOUT				LEASE AND SUSPENSION AGREEMENT DA-04-203 ENG-4048 **
	* DELMAR B. KENNETH CORNELIUS				LEASE AND SUSPENSION AGREEMENT DA-04-203 ENG-4049 **
	* H. M. WALLACE				S.F.R.E. -1124 FOR UNPATENTED, UNVALIDATED LODE MINING CLAIM ***
A-100	HELEN H. WILLIAMS		2.08		DA-04-203 ENG 3797
A-101	DELMAR CORNELIUS, ET UX		1.60		DA-04-203 ENG 3798
A-102-L	COUNTY OF WASHINGTON, UTAH			1.53	LICENSE S.F.R.E.-786 FOR WATER PIPE LINE R/W DATED 4-20-55.
A-103-L	STATE ROAD COMMISSION OF STATE OF UTAH			.06	LICENSE S.F.R.E.-785 FOR WATER PIPE LINE R/W DATED 3-8-55.
A-104	STATE OF UTAH		643.83		DA-04-203 ENG 4050

\* LEASE VENDOR

\*\* TERMINATED 2-1-63  
\*\*\* TERMINATED 11-6-62

FINAL PROJECT MAP

DEPT OF THE AIR FORCE  
 USING SERVICE AIR FORCE SYSTEMS COMMAND  
 STATE UTAH  
 COUNTY WASHINGTON  
 DIVISION SOUTH PACIFIC  
 DISTRICT SACRAMENTO  
 ARMY AREA 6TH

LOCATION OF PROJECT

12 MILES N.E. OF WASHINGTON  
 2.4 MILES N.E. OF HURRICANE

TRANSPORTATION FACILITIES

RAILROADS  
 STATE ROADS NO. 15  
 FEDERAL ROADS NO. 91  
 AIR LINES

ACQUISITION

TOTAL ACRES ACQUIRED 3,500.78  
 ACRES FEE  
 ACRES TRANSFERRED PD 2,851.68  
 ACRES LEASED 647.51  
 ACRES LESSER INTERESTS LIC.(2) 1.59

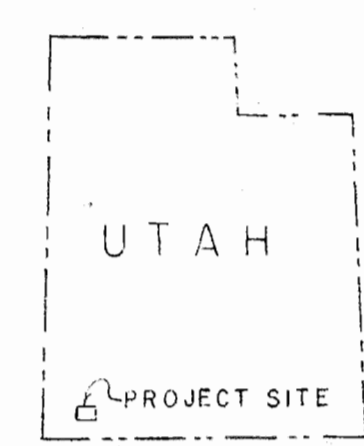
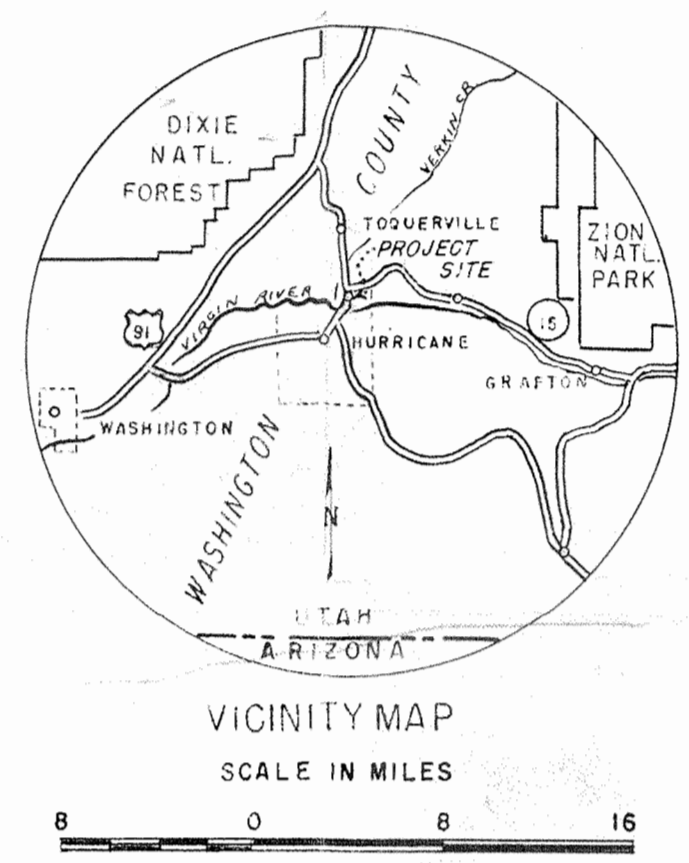
DISPOSAL

TOTAL ACRES DISPOSED OF 3,500.78  
 ACRES SOLD  
 ACRES TRANSFERRED PD 2,851.68  
 ACRES LEASES TERMINATED 647.51  
 ACRES LESS. INT'S. TERMINATED LIC. (2) 1.59  
 ACRES REASSIGNED

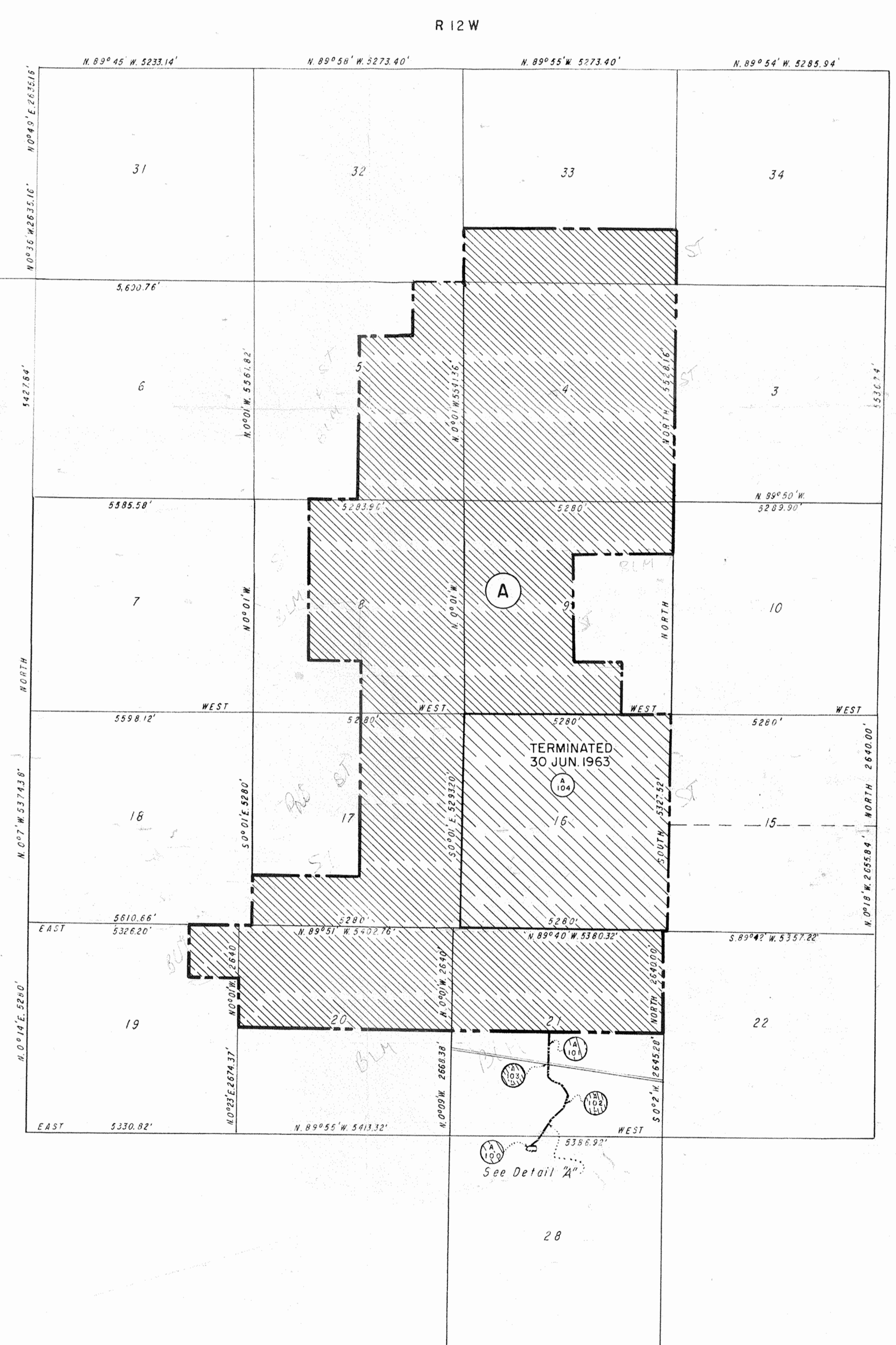
LEGEND

EXCEPT FOR THE SPECIAL SYMBOLS SHOWN BELOW, MAP SYMBOLS ARE STANDARD IN ARMY MAP SERVICE TECHNICAL MANUAL NO. 93.

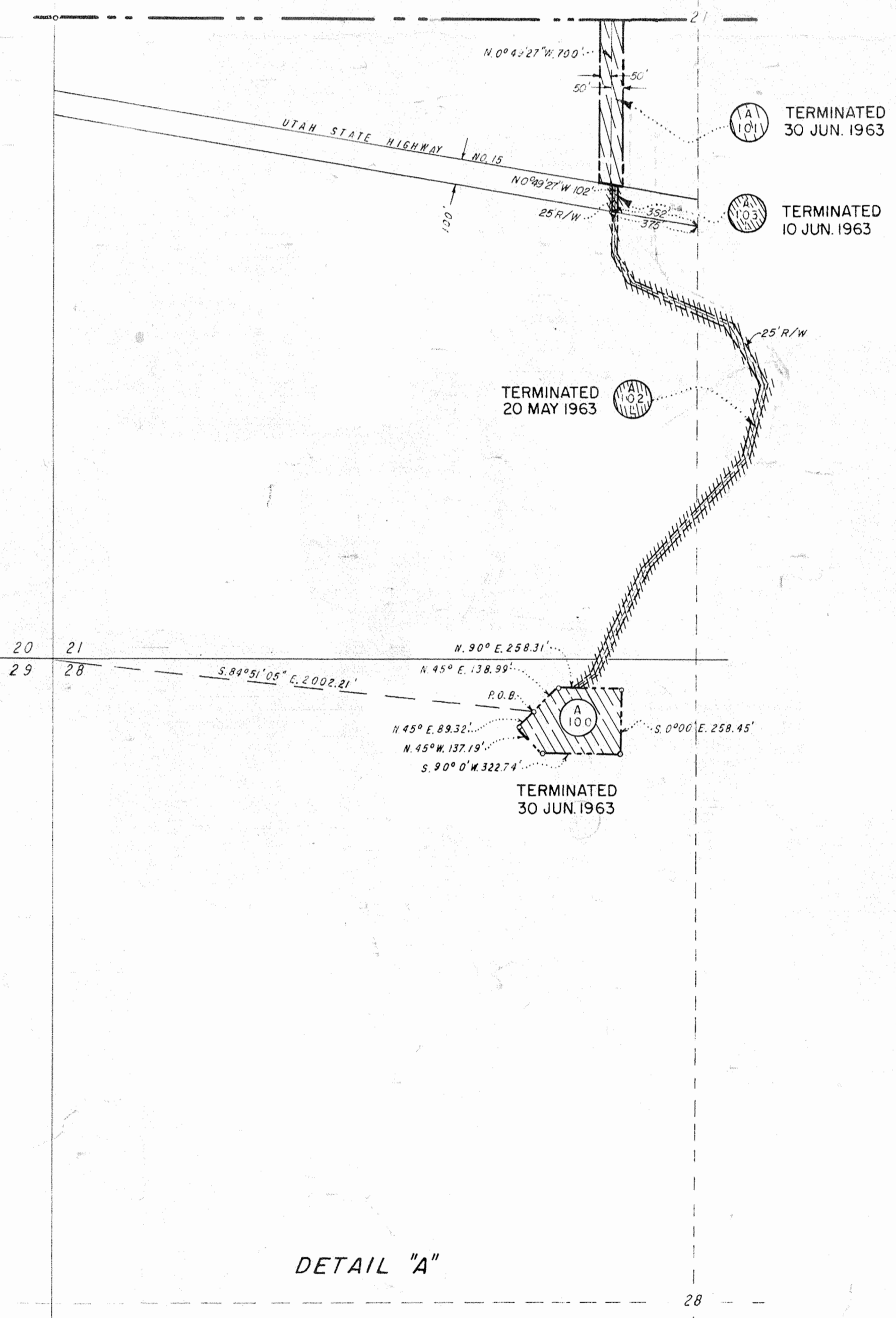
RESERVATION LINE  
 RESERVATION LINE (Actual Survey)  
 TRACT BOUNDARY LINE  
 TRACT NUMBER  
 AVIGATION EASEMENT  
 CONTOUR LINE  
 DISPOSAL



STATE INDEX



S.L.B. & M.



DETAIL "A"

SCALE: 1" = 400'

2,851.68 AC. PD. BY P.L.O. 1125 RELINQUISHED TO DEPARTMENT OF INTERIOR, BUREAU OF LAND MANAGEMENT 2 OCT. 1962, RETRANSFERRED TO DEPARTMENT OF INTERIOR, BUREAU OF LAND MANAGEMENT BY P.L.O. 3122 DTD. 3 JUL. 1963.

NOTE: The boundary of this installation was compiled from deed descriptions and General Land Office plats.

ACQUISITION AUTHORIZATION

1 ST Ind Hq USAF to OCE DTD 9 APR 1954  
 4 TH Ind Hq USAF to OCE DTD 26 OCT 1954

SEGMENT "A"

DEPARTMENT OF THE ARMY  
 OFFICE OF THE SACRAMENTO DISTRICT ENGINEER  
 SOUTH PACIFIC DIVISION

DRAWN BY J.C.M.  
 TRACED BY J.C.M.  
 CHECKED BY  
 SUBMITTED BY  
 Joseph D. MacLaughlin  
 CHIEF, ENGINEERING SECTION

REAL ESTATE  
**HURRICANE SUPERSONIC RESEARCH SITE**  
 (MILITARY RESERVATION)

RECOMMENDED BY  
 Steve B. Brown  
 CHIEF, PLANNING CONTROL BRANCH

APPROVED BY  
 [Signature]  
 CHIEF, REAL ESTATE DIVISION  
 DATE 17 MAY 1955

8-15-63	Disposal Data Added	D.A.B.
6-1-61	Jurisdiction transferred from San Francisco District	J.C.M.
11-26-57	Due to Final Audit	H.J.B.
DATE	REVISIONS	BY

**AUDITED**

OFFICE, CHIEF OF ENGINEERS, WASHINGTON 25, D. C.  
 SCALE IN FEET  
 0 2000 4000  
 SHEET 1 OF 1 DRAWING NO. FB 349